
THE ENGLISH LANGUAGE INSTITUTE

Alumni Newsletter

Volume 3, Issue 1

Summer 2002

From the Director

We're very happy to bring you the third ELI Alumni newsletter. It has been a challenging time in the US, as you know. We are very grateful for your email and letters of support. All of us at the ELI feel that our work in international education is more important than ever now. As ELI teachers and staff, we enjoy learning about your countries and cultures and coming to visit, from time to time. As ELI students, you made friends not only with people in the US, but also with your classmates from many other countries. We build bridges in our classrooms that link people around the world, help us understand each other, and bring us closer to peace. Please keep sending us information about what you're doing now. Also, take a look at the ELI alumni discussion list - there is a note about it later in this issue. If you are ever in Corvallis, please stop in and say hello!



ELI Staff: Janet Swinyard, Deborah Healey, Tina Withrow-Robinson, Jane Averill, Sarah Kraemer, Candace Pierson-Charlton, Debby Marino, Rachel Powell, Carmen DeTata, Michael Witbeck, Maria Dantas-Whitney, Barbara Dowling, Eve Chambers, Ann Larson and Donna Shaw.

Michael Witbeck and **Eve Chambers** are back briefly from Cyprus, where they are part of the ELI's "Teaching English Language Enhancement Project." They are working with teachers, setting up workshops, and visiting schools in the area.

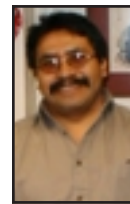
ELI Alumni Discussion List

Since many of you have expressed an interest in sharing information with each other, we are setting up a discussion list for ELI alumni. If you are looking for someone,

you can post a question to the list. This will also be a way for ELIers in the same city or region to find each other if you want to set up a get-together. If you have given us permission to share your name, you are a member of the list. If you are an ELI alumnus and would like to be a member of the list, please fill out the ELI alumni guestbook form on our website at <http://oregonstate.edu/dept/eli/alumni/> and we will add you to the list.

ELI Alums at OSU

Su-Young Jeong (Korea) was enrolled at the ELI in the summer of 2000. He is working on a master's degree in mechanical engineering.



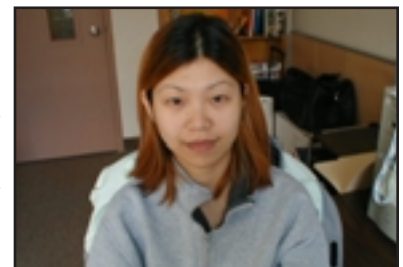
Efrain Cruz-Cruz (Oaxaca, Mexico) attended the ELI in September, 2001; passed his TOEFL and is now pursuing a doctorate degree in Rangeland Resources.

Goshi Ogawa (Japan) was at the ELI from fall 1998 to spring of 1999. Goshi will graduate in June 2002 with a B.S. in Fisheries.



Stephen Mpofo (Botswana) was enrolled at the ELI fall 2001; he passed his TOEFL in the fall and is working on a B.S. degree in Zoology.

Chia-Yi Kang (Taiwan) attended the ELI from spring 1998 to the summer of 1999. Joy, as she is known to friends, has now graduated with a degree in Industrial Engineering and has a job with Honeywell.



After the ELI

Hector Hernandez (Mexico), ELI student summer of 1995: earned an MIS degree from OSU. Hector is currently the Hispanic Programs Coordinator for Oregon Pacific AHEC. He has his own art and culture business. Hector painted the mural in the background, in La Raza Conference Room of the OSU Memorial Union.



Yoram Davidson (Israel) attended the ELI fall term 2000. Yoram is a system engineer in an electro-optical company. He is pictured with his wife Yafa, and daughters, Amit, Reuit, and Noa.



Pablo Rosso (Argentina) left, pictured with **Hamidou Sy** (Senegal) was at the ELI in summer 1992: a LASPAU scholar, he received his master's degree in 1995 and his doctorate in 2001 from OSU, both in Botany and Plant Pathology. Pablo is presently doing a post doc at UC Davis, California on the use of remote sensing (satellite and arial images) and GIS in the study of ecology of wetlands. **Hamidou Sy** (Senegal) attended the ELI in 1992. He received his master's degree in 1996 from OSU. He is currently an electrical engineer with Wireless Facilities Inc.



Luis Cortez (El Salvador), ELI student in 1989: received a master's degree in Fine Arts from San Diego State University in 1992. Luis has exhibited his art in many galleries across the U.S. and Canada, and most recently, a solo show at the Salvadorian Embassy in Canada.



From Around the World

1982

Mohammed Jassim Obaidon (Saudi Arabia) graduated from Middle Tennessee State University, received a bachelor's degree in Computer Science and Business Administration. Mohammad writes, "I really love your program and it helped me to finish my degree."

1985

Yumiko Kojima (Japan) teaches English at a private school in Japan. Yumiko writes, "I enjoy my job very much. I sometimes meet some friends from ELI/OSU."

1988

Rosa Martha De La Pena (Mexico) is chief editor of one of the most important newspapers of northern Mexico. Rosa writes, "I really want to contact some of the people who studied with me. Mauricio Lolas, Kutu and Yerko from Chile; Luis Cortés from El Salvador; Encarna Bahena from Spain; Ibrahim Al Hairy from Jordan; and Dania Samudio from Panama."

1992

Naoyuki & Yuka Hirata (Japan), both students at ELI in 1992, met in Corvallis and got married in Japan. Naoyuki is an acupuncturist in Tokyo. "Corvallis is a special town for us because it is where we met."

We'd love to hear from you! Please take a few minutes to complete the short form below. Also, you can send us an update at the ELI alumni webpage: <http://oregonstate.edu/dept/eli/alumni/> Send us a photo along with your information if you'd like to have your picture included in the next issue of the newsletter.

Your name

Your home address

Your email address

(may we share this with others?) _____

Your job -or- what you are doing now