

Manual Installation of BI Query User Version 9

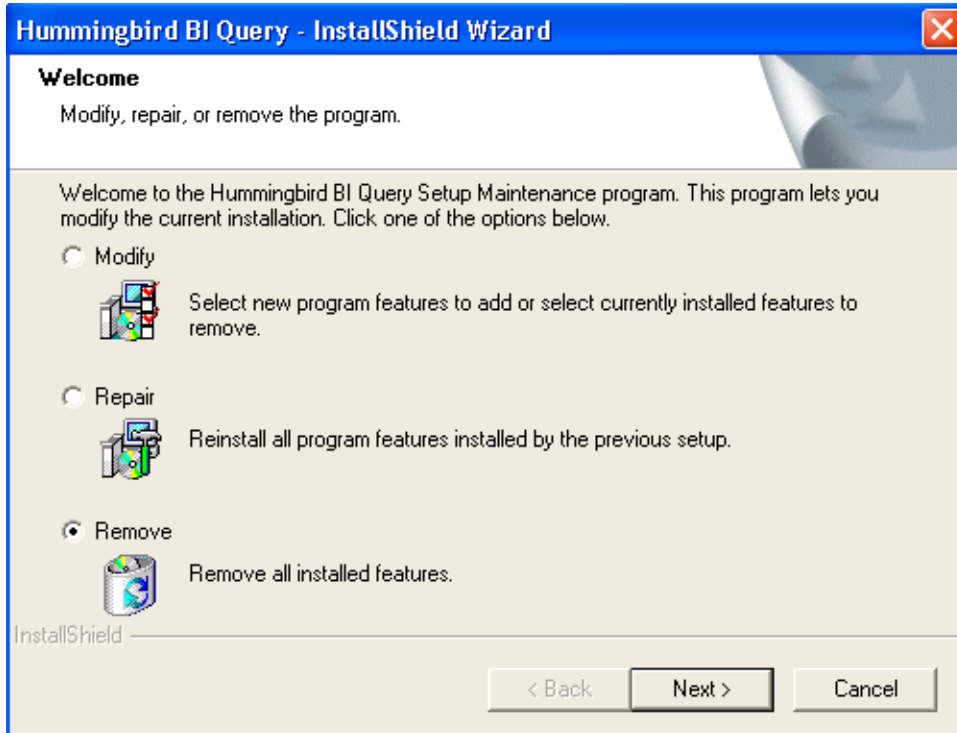
Log on to the computer as a member of the Administrators group.

If BI Query User version 9.0.1 is installed, uninstall it manually prior to installing version 9.0.2. Otherwise, skip that step. If version 7.x or 8.x is installed, the version 9.0.2 installer will uninstall it for you.

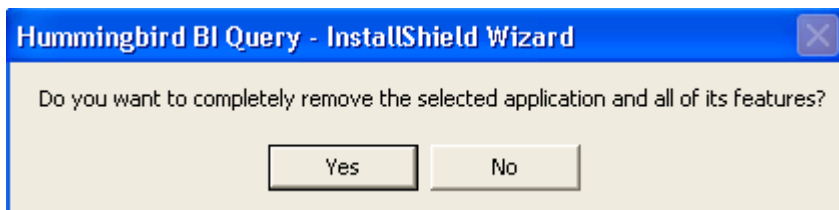
Uninstall BI Query User Version 9.0.1

Go to Start > Control Panel > Add or Remove Programs.

Select Hummingbird BI Query and click "Change/Remove".

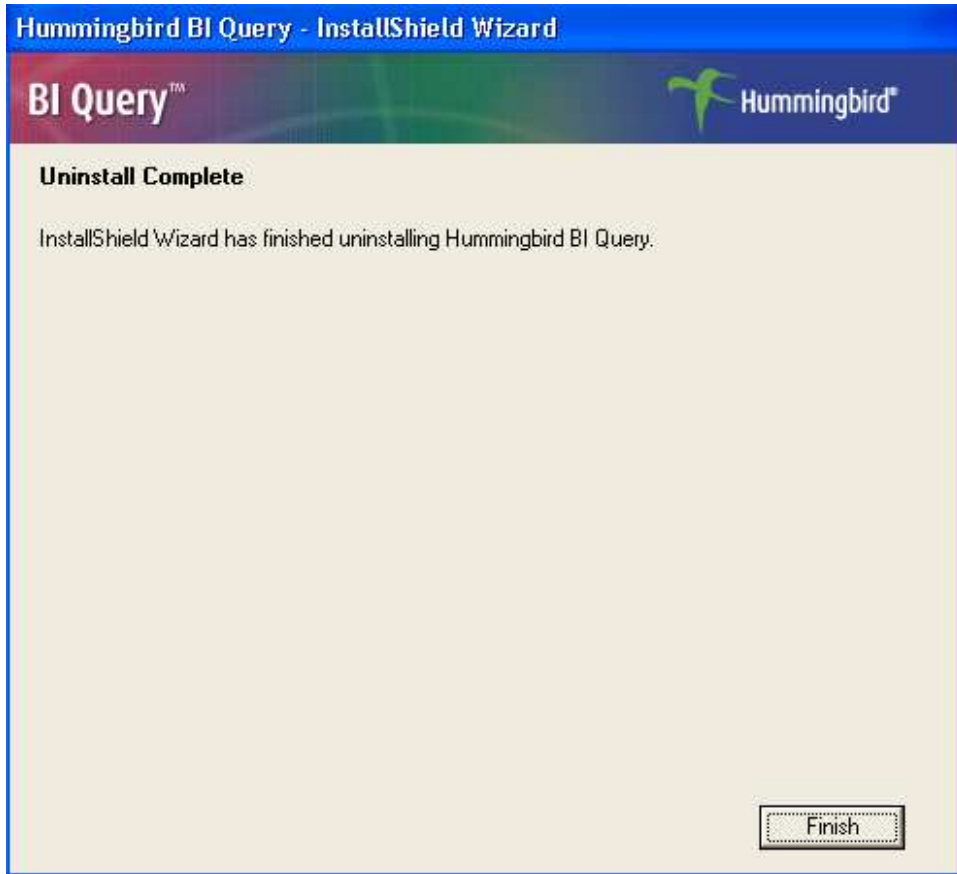


Click "Remove" and click "Next".



Click "Yes".

Manual Installation of BI Query User Version 9



Click "Finish".

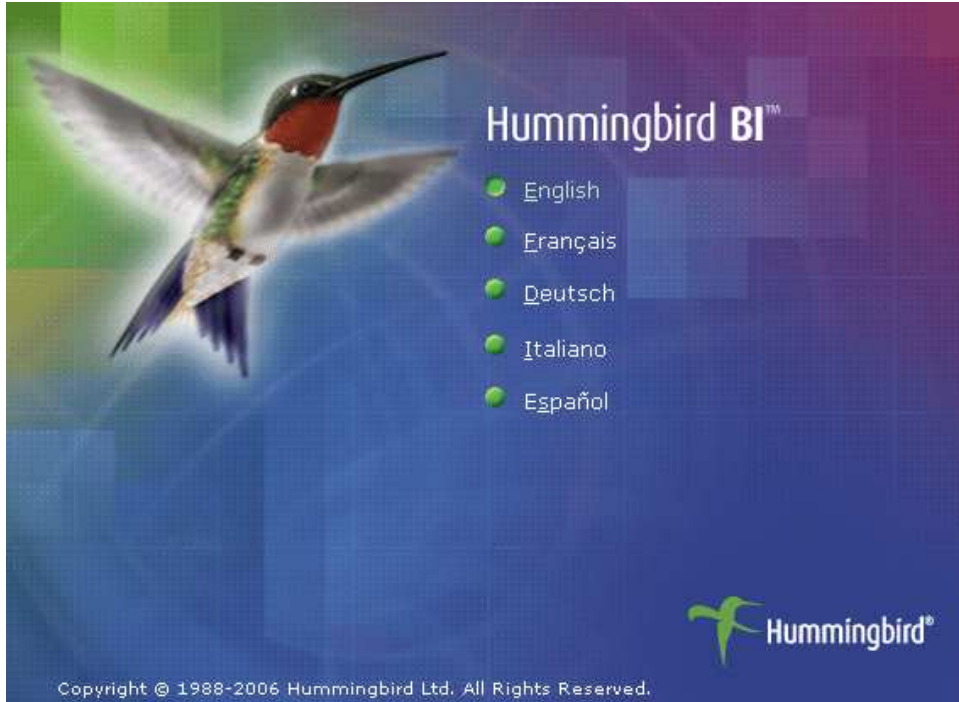
Close the Add or Remove Programs dialog box.

Close the Control Panel.

Install BI Query User Version 9.0.2

Run <\\tss-softstore\Software\Data Warehouse\BIQuery\9\CD\setup.exe>.

Manual Installation of BI Query User Version 9

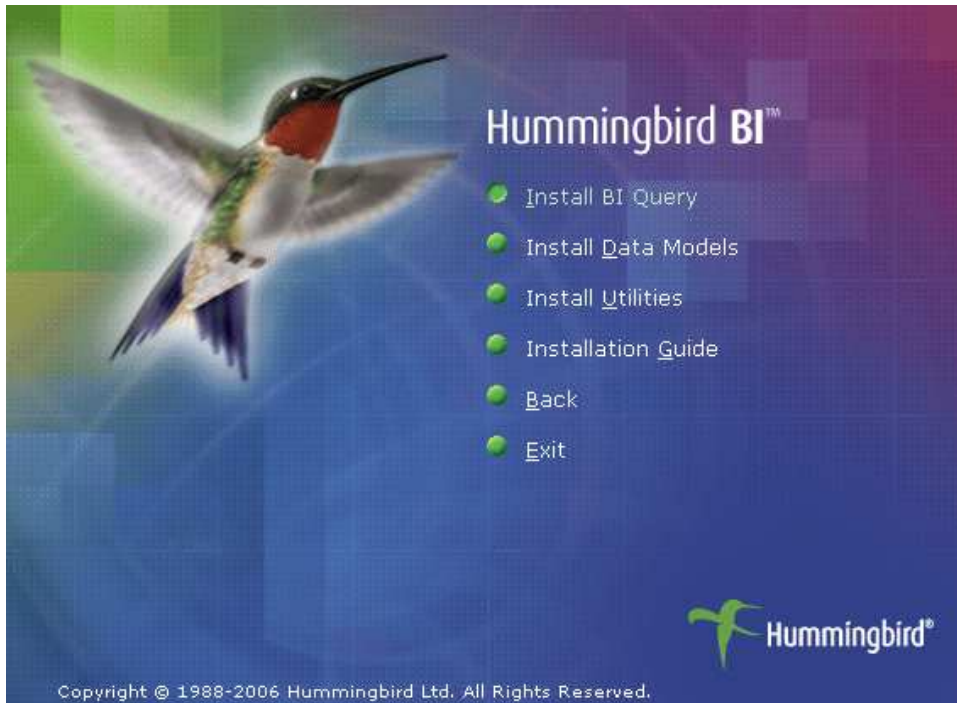


Click "English".

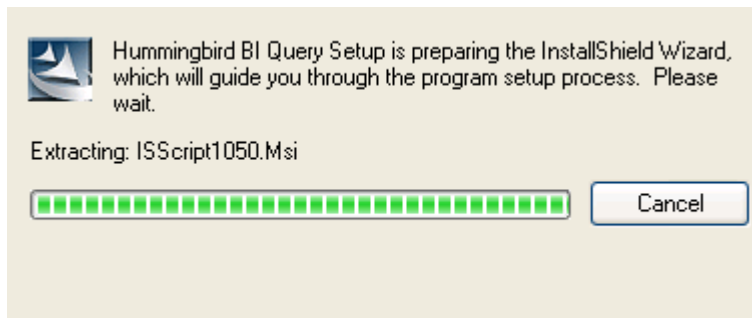


Click "BI Query".

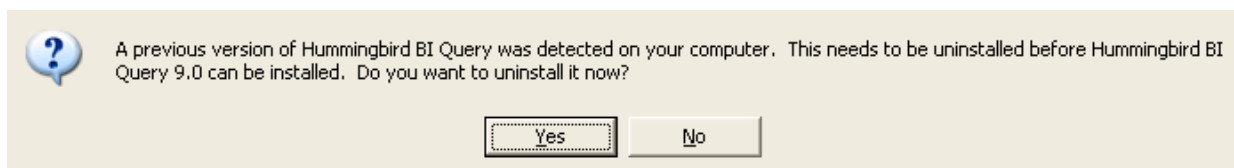
Manual Installation of BI Query User Version 9



Click "Install BI Query" and wait while the Install Shield Wizard works.

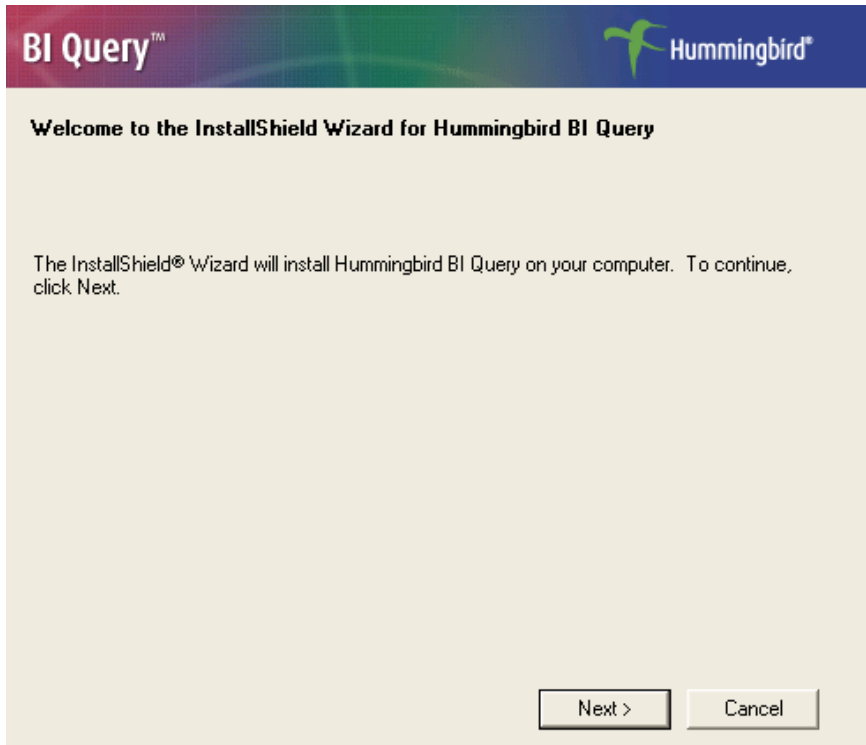


If version 7.x or 8.x of BI Query is installed, you should see the following message:

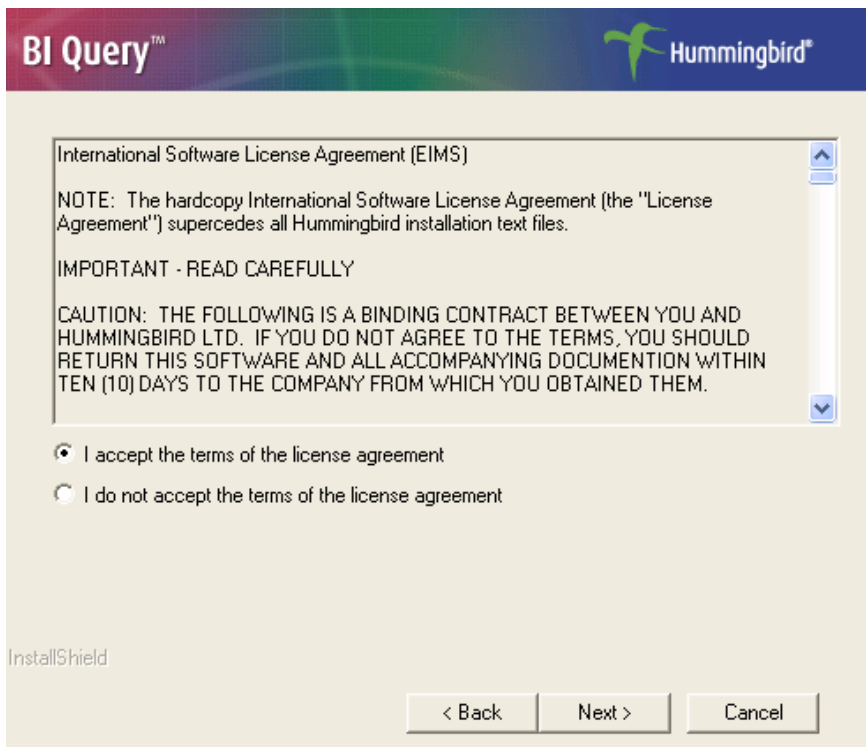


Click "Yes".

Manual Installation of BI Query User Version 9

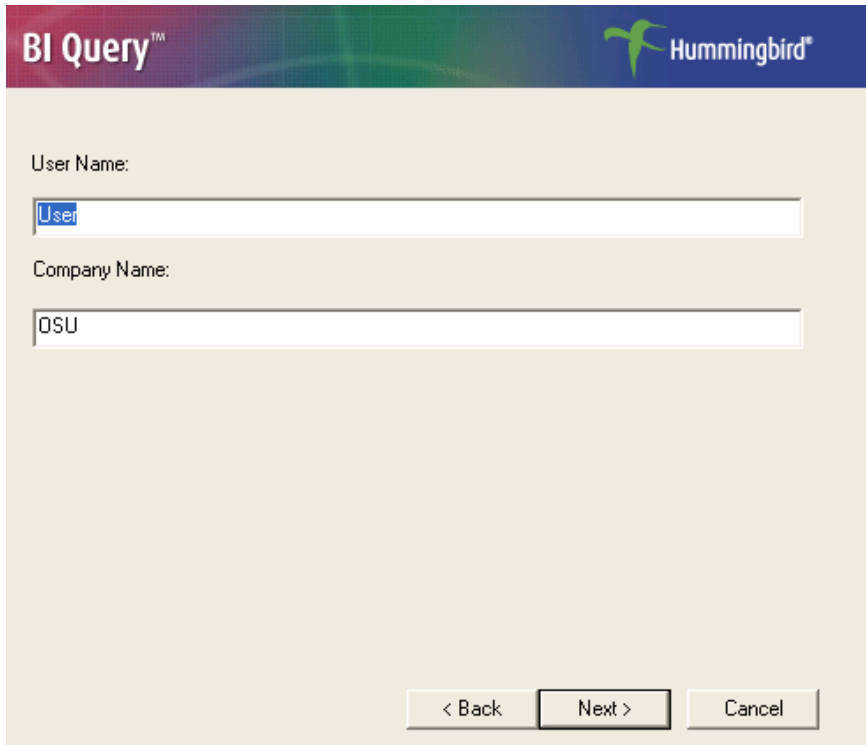


Click "Next".



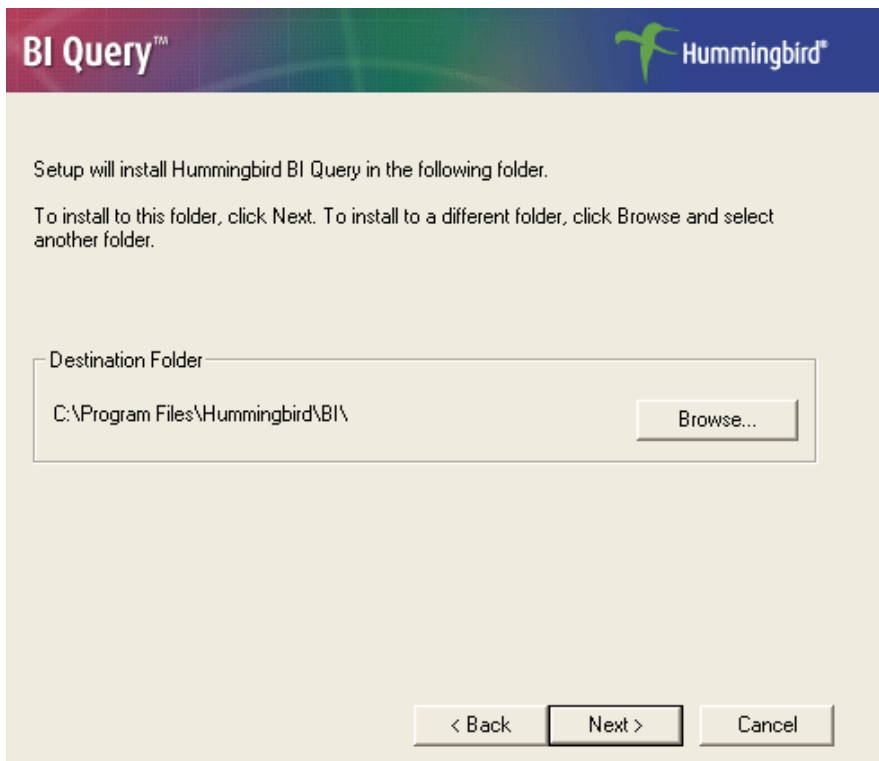
Select "I accept the terms of the license agreement" and click "Next".

Manual Installation of BI Query User Version 9



The dialog box features a header with the "BI Query" logo on the left and the "Hummingbird" logo on the right. Below the header, there are two text input fields. The first is labeled "User Name:" and contains the text "User". The second is labeled "Company Name:" and contains the text "OSU". At the bottom of the dialog, there are three buttons: "< Back", "Next >", and "Cancel".

Fill in a User Name and Company Name, and click "Next".



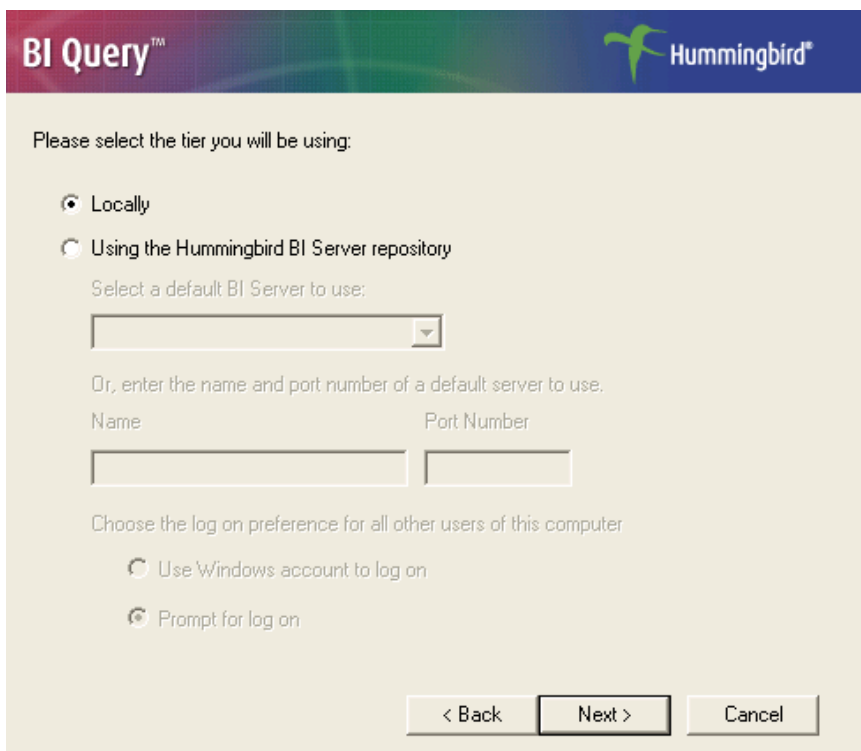
The dialog box features a header with the "BI Query" logo on the left and the "Hummingbird" logo on the right. Below the header, there is a text block that reads: "Setup will install Hummingbird BI Query in the following folder. To install to this folder, click Next. To install to a different folder, click Browse and select another folder." Below this text is a text input field labeled "Destination Folder" containing the path "C:\Program Files\Hummingbird\BI\". To the right of this field is a "Browse..." button. At the bottom of the dialog, there are three buttons: "< Back", "Next >", and "Cancel".

Click "Next".

Manual Installation of BI Query User Version 9

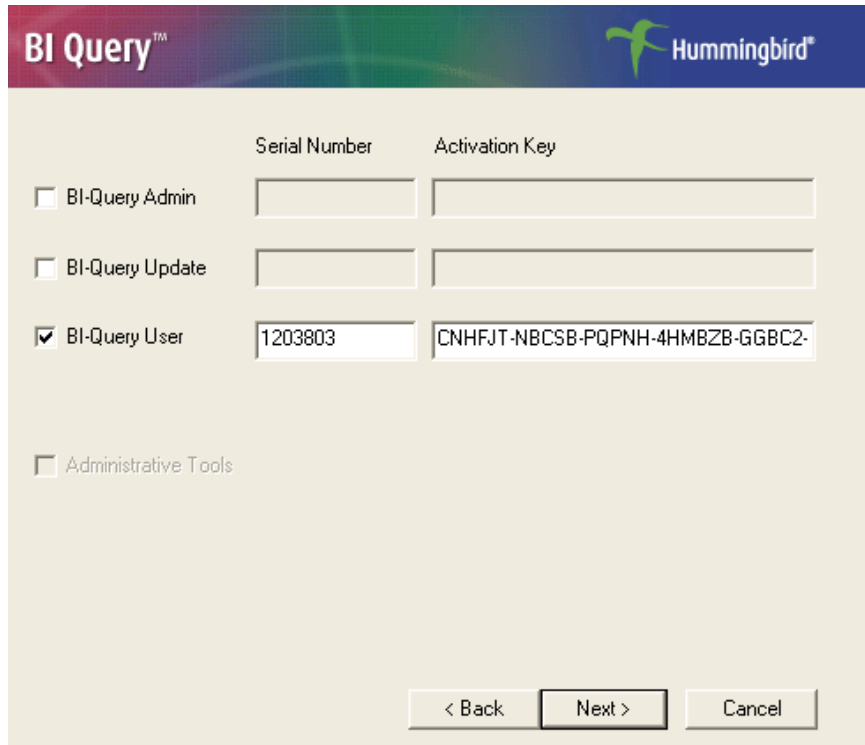


If you get this Windows message, click "Unblock".



Make sure "Locally" is selected, and click "Next".

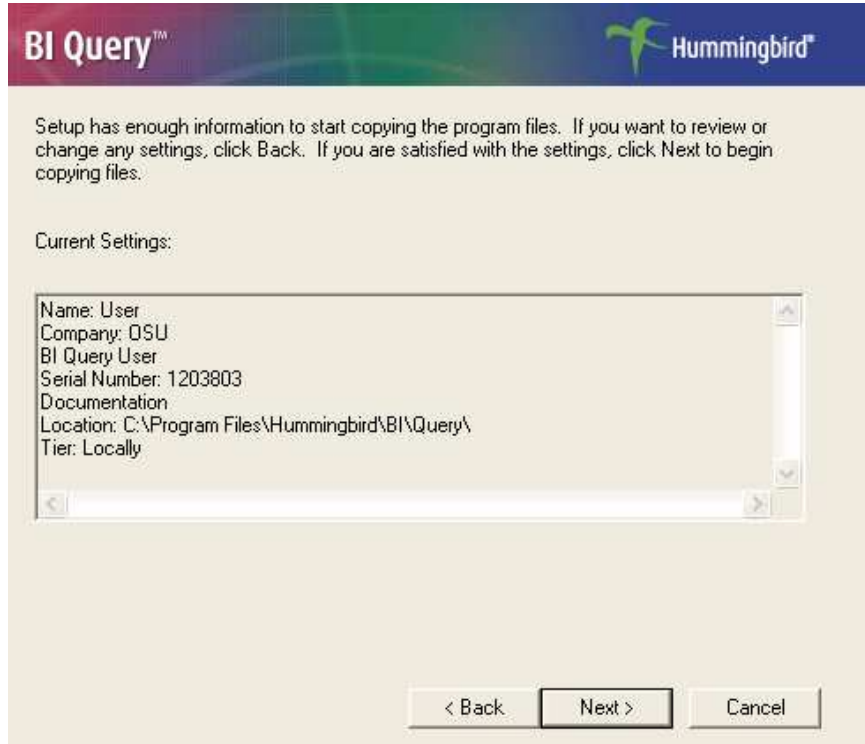
Manual Installation of BI Query User Version 9



The screenshot shows the first step of the BI Query User installation wizard. The window title is "BI Query™" and the Hummingbird logo is in the top right. The main area contains three rows of checkboxes and input fields. The first row is for "BI-Query Admin", the second for "BI-Query Update", and the third for "BI-Query User", which is checked. The "BI-Query User" row has a "Serial Number" field containing "1203803" and an "Activation Key" field containing "CNHFJT-NBCSB-PQPNH-4HMBZB-GGBC2-". Below these is a checkbox for "Administrative Tools". At the bottom are three buttons: "< Back", "Next >", and "Cancel".

	Serial Number	Activation Key
<input type="checkbox"/> BI-Query Admin		
<input type="checkbox"/> BI-Query Update		
<input checked="" type="checkbox"/> BI-Query User	1203803	CNHFJT-NBCSB-PQPNH-4HMBZB-GGBC2-
<input type="checkbox"/> Administrative Tools		

Check BI-Query User. Enter the Serial Number 1203803 and Activation key CNHFJT-NBCSB-PQPNH-4HMBZB-GGBC2-D (note: the entire key is not visible), and click "Next".



The screenshot shows the second step of the BI Query User installation wizard. The window title is "BI Query™" and the Hummingbird logo is in the top right. The main area contains a paragraph of text: "Setup has enough information to start copying the program files. If you want to review or change any settings, click Back. If you are satisfied with the settings, click Next to begin copying files." Below this is the heading "Current Settings:" followed by a scrollable text box containing the following information: "Name: User", "Company: OSU", "BI Query User", "Serial Number: 1203803", "Documentation", "Location: C:\Program Files\Hummingbird\BI\Query\", and "Tier: Locally". At the bottom are three buttons: "< Back", "Next >", and "Cancel".

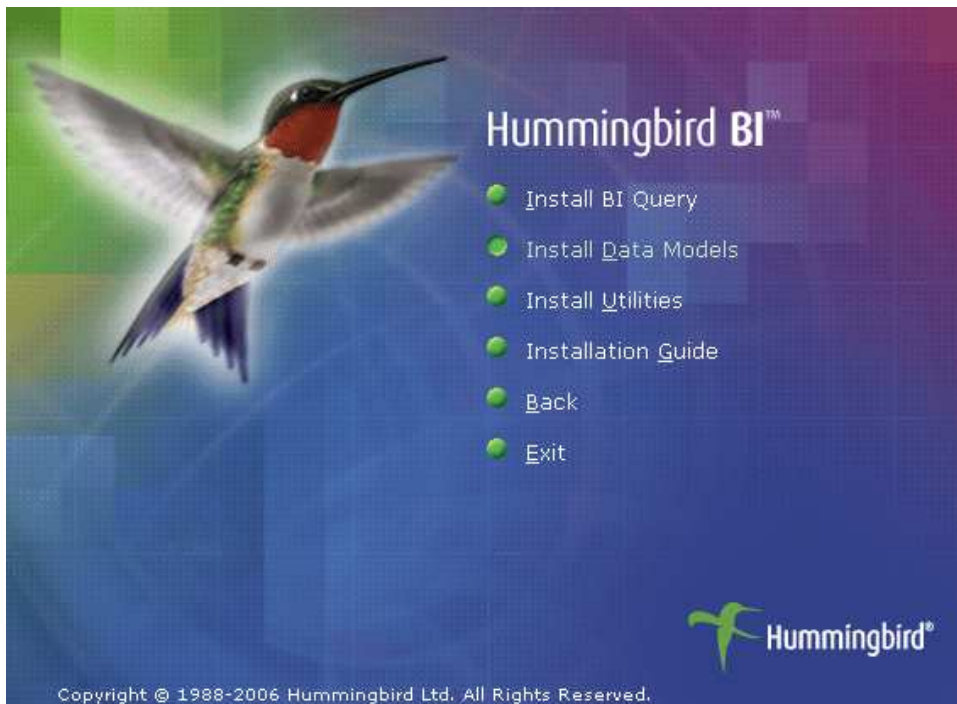
Click "Next".

Manual Installation of BI Query User Version 9



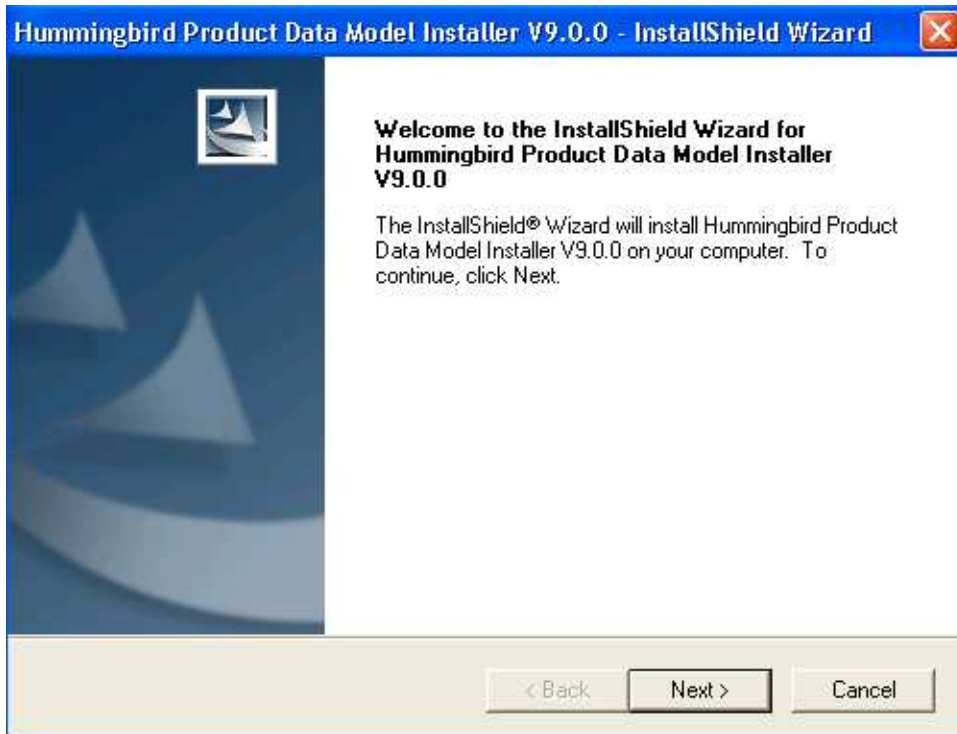
Click "Finish".

Install the Sample Data Models to Facilitate User Training

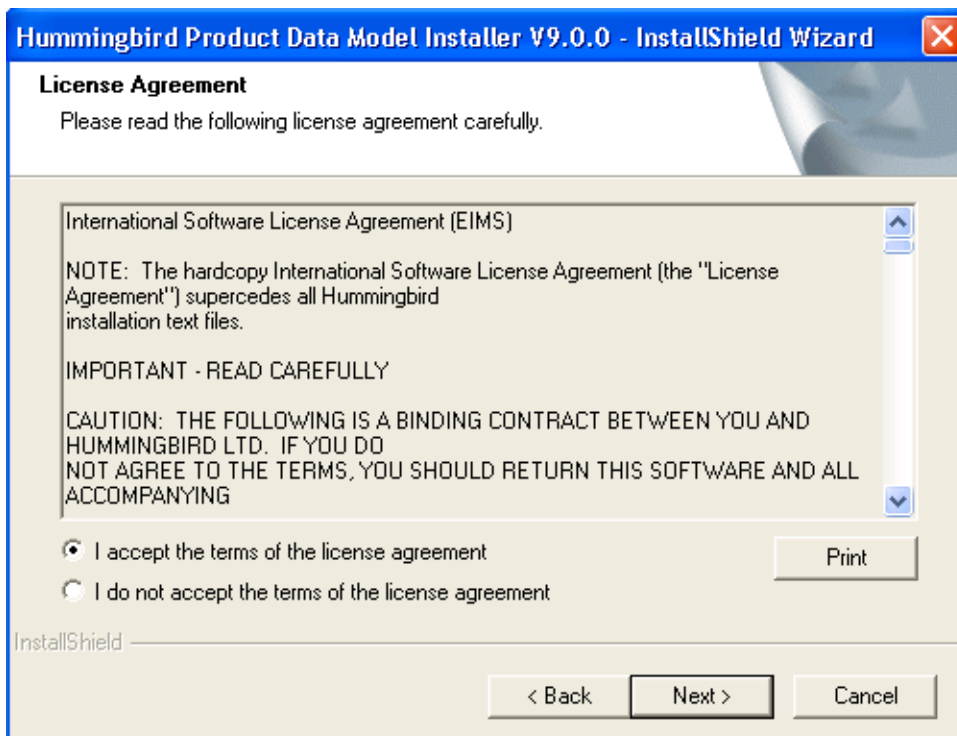


Click "Install Data Models".

Manual Installation of BI Query User Version 9



Click "Next".



Select "I accept the terms of the license agreement" and click "Next".

Manual Installation of BI Query User Version 9

Hummingbird Product Data Model Installer V9.0.0 - InstallShield Wizard

Customer Information

Please enter your information.

User Name:
User

Company Name:
OSU

InstallShield

< Back Next > Cancel

Fill in the User Name and Company Name and click "Next".

Hummingbird Product Data Model Installer V9.0.0 - InstallShield Wizard

Choose Destination Location

Select folder where setup will install files.

Setup will install Hummingbird Product Data Model Installer V9.0.0 in the following folder.
To install to this folder, click Next. To install to a different folder, click Browse and select another folder.

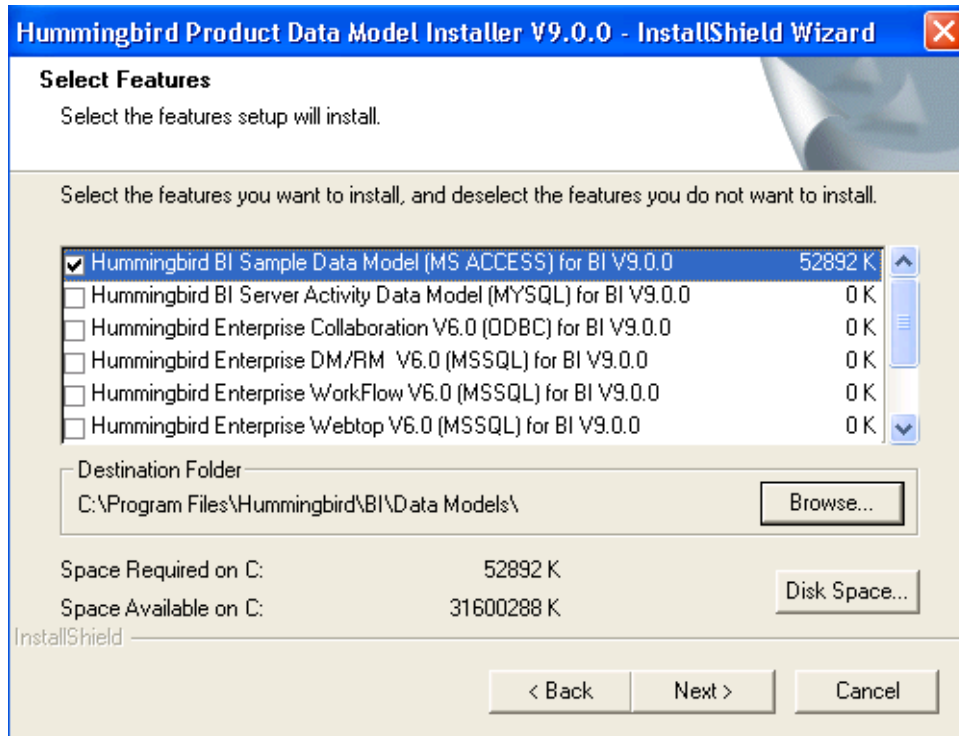
Destination Folder
C:\Program Files\Hummingbird\BI\Data Models\ Browse...

InstallShield

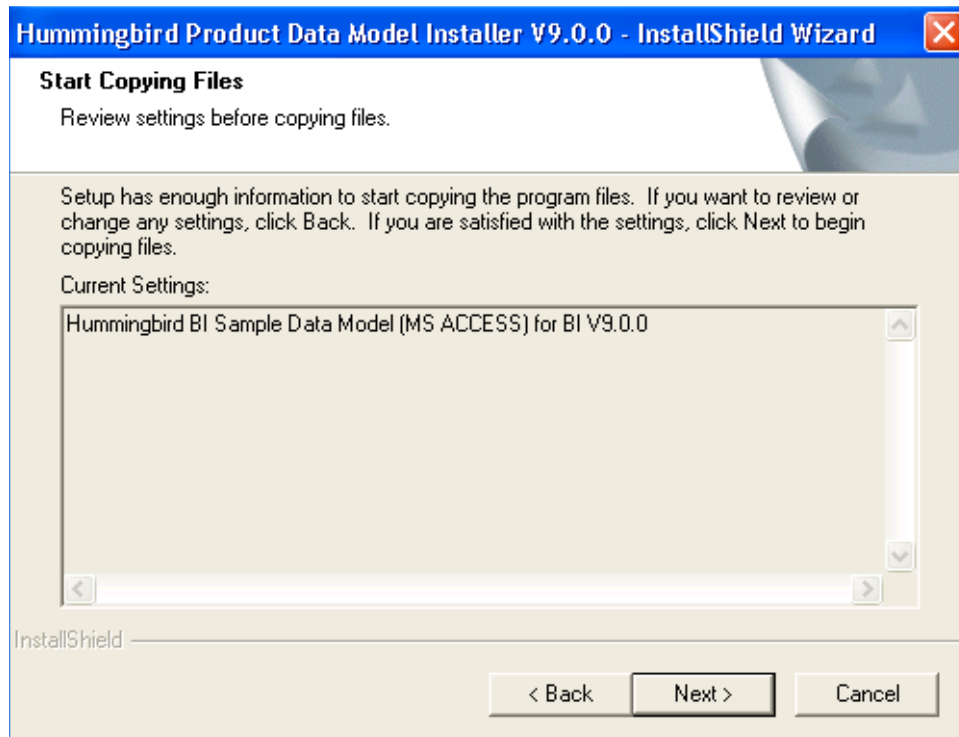
< Back Next > Cancel

Click "Next".

Manual Installation of BI Query User Version 9

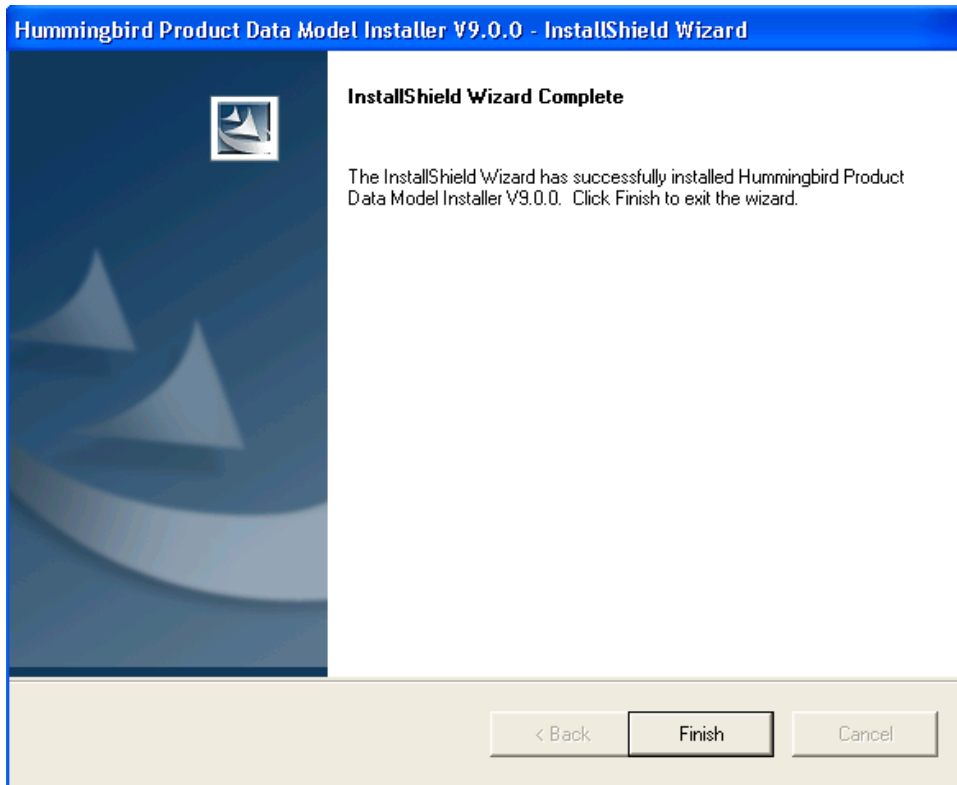


Leave only the "Hummingbird BI Sample Data Model (MS ACCESS) for BI v9.0.0" selected and click "Next".

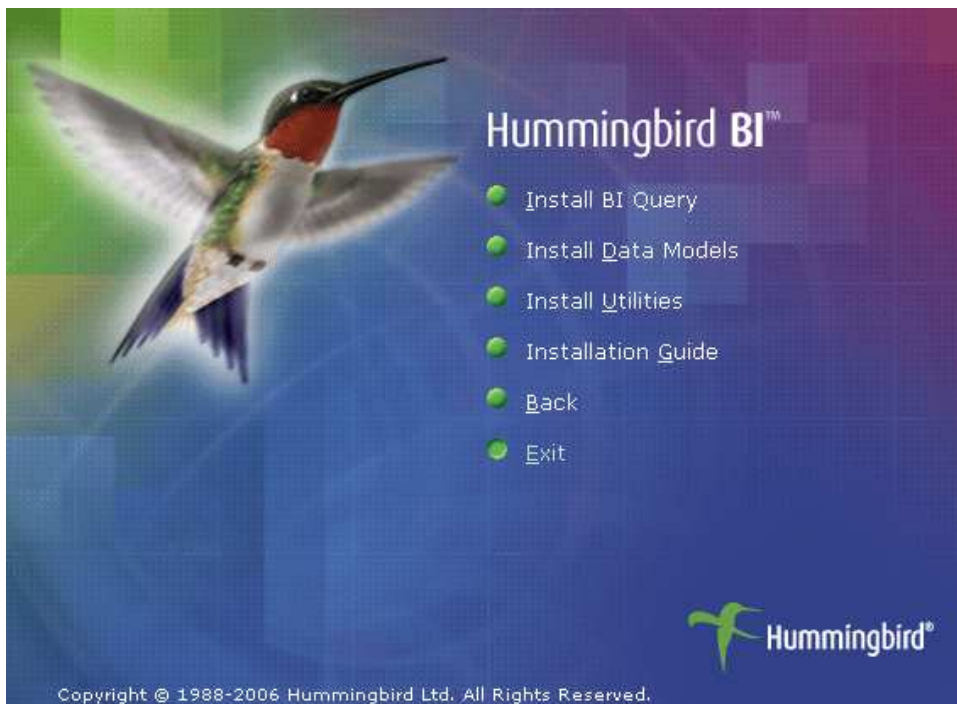


Click "Next".

Manual Installation of BI Query User Version 9



Click "Finish".



Click "Exit".

Manual Installation of BI Query User Version 9

Set Firewall Exception for BI Query Reports

Go to Start > All Programs > Hummingbird > BI Query > BI Query Reports.



If you get a Windows Security Alert, click "Unblock".

Close the "Welcome to BI Query Reports" dialog box. Close BI Query Reports.