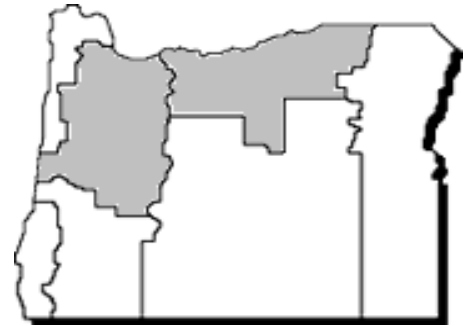


Commodity Data Sheet

Sweet Corn for Processing



Commodity number-crop year: 7340-06*

Extension Economic Information Office
 Oregon State University
 219 Ballard Extension Hall
 Corvallis, OR 97331-3601 (541) 737-1436

September 2007

Item and area	Unit	2002	2003	2004	2005	2006
Total production						
Oregon	Tons	263,580	271,680	259,910	233,810	249,160
Minnesota	Tons	884,630	938,800	894,590	977,770	965,550
New York	Tons	89,040	108,780	110,200	116,160	115,240
Washington	Tons	899,200	900,540	826,140	792,160	806,140
Wisconsin	Tons	596,050	681,420	511,220	680,230	611,260
United States						
All	Tons	3,067,690	3,266,050	2,968,180	3,174,800	3,086,390
Canned	Tons	1,428,000	1,556,310	1,458,270	1,599,700	1,439,870
Frozen	Tons	1,639,690	1,709,740	1,509,910	1,575,100	1,646,520
Farm price						
Oregon	Dollars/ton	78.30	81.00	80.70	79.20	81.80
Minnesota	Dollars/ton	64.60	64.50	72.50	71.60	67.20
New York	Dollars/ton	69.70	78.40	77.70	80.40	77.30
Washington	Dollars/ton	72.40	76.90	70.10	69.00	66.60
Wisconsin	Dollars/ton	56.20	62.30	67.20	61.70	62.70
United States						
All	Dollars/ton	68.00	70.40	72.10	68.40	66.80
Canned	Dollars/ton	65.60	68.60	71.20	64.50	62.40
Frozen	Dollars/ton	70.20	72.00	73.00	72.30	70.60
Value of production						
Oregon	1,000 dollars	20,629	21,999	20,974	18,523	20,391
Minnesota	1,000 dollars	57,159	60,563	64,887	69,960	64,904
New York	1,000 dollars	6,206	8,523	8,563	9,339	8,908
Washington	1,000 dollars	65,115	69,256	57,890	54,675	53,701
Wisconsin	1,000 dollars	33,520	42,471	34,358	41,973	38,300
United States						
All	1,000 dollars	208,703	229,788	213,993	217,111	206,020
Canned	1,000 dollars	93,644	106,697	103,832	103,227	89,848
Frozen	1,000 dollars	115,059	123,091	110,161	113,884	116,172

*Shaded areas of map represent the major areas of production for this commodity.

Source: USDA/NASS (National Agricultural Statistics Service)

Electronic access to this publication is available at: <http://oregonstate.edu/oain/>. Click the Commodity Data Sheets button.

Sweet corn for processing: Acreage, yield, production and value of sales, by county, Oregon, 2004-2006

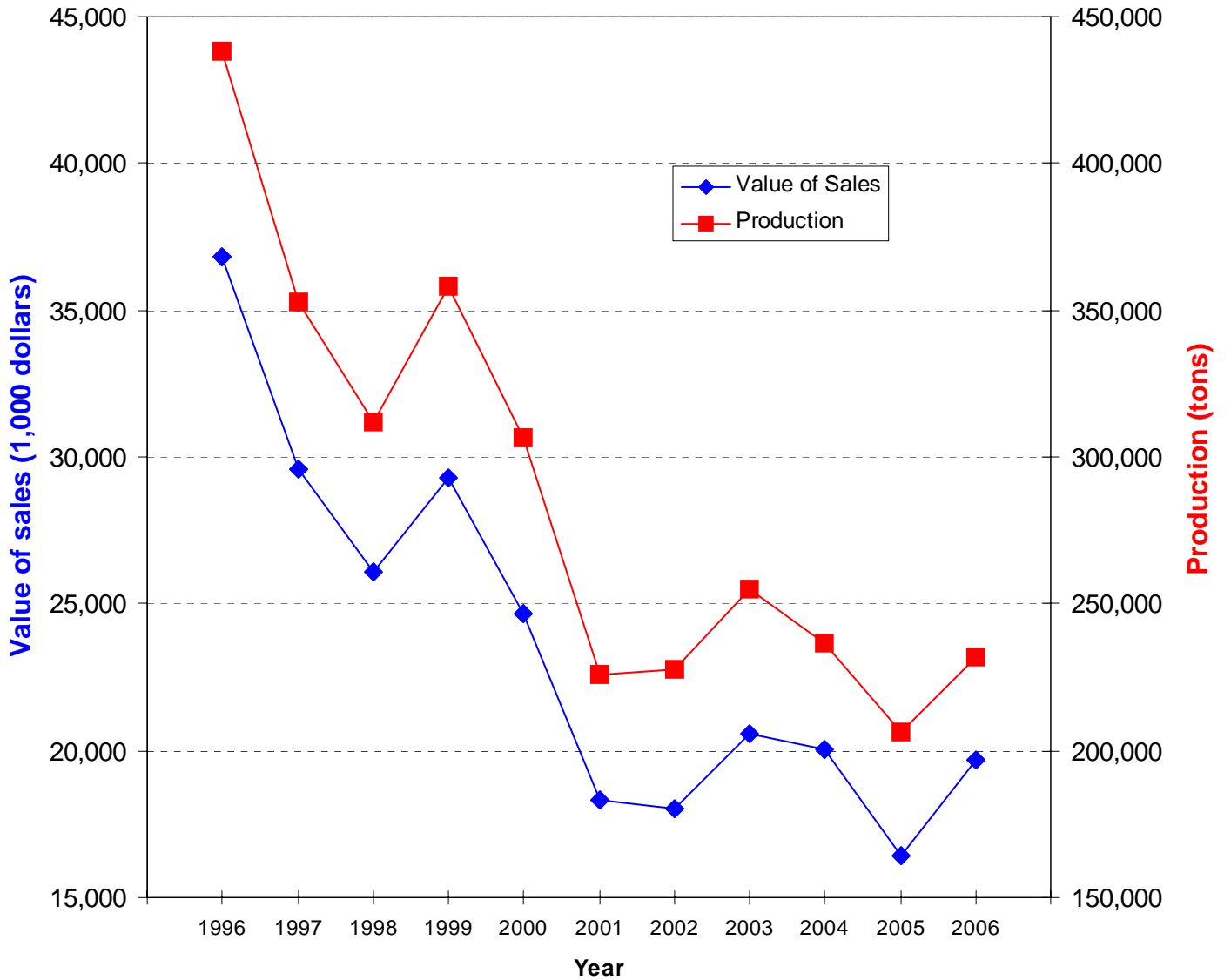
District & county	Acreage harvested			Yield per acre		
	2004r	2005r	2006p	2004r	2005r	2006p
	<i>Acres</i>	<i>Acres</i>	<i>Acres</i>	<i>Tons</i>	<i>Tons</i>	<i>Tons</i>
Washington	2,480	1,910	1,810	8.0	9.9	9.6
Not disclosed	18,330	14,290	15,620	8.2	10.2	9.8
Willamette Valley	20,810	16,200	17,430	8.2	10.2	9.8
Not disclosed	190	190	350	8.2	8.7	8.6
Coastal	190	190	350	8.2	8.7	8.6
Umatilla	1,550	-	-	8.8	-	-
Not disclosed	5,510	4,300	6,210	9.3	9.3	9.4
North Central	7,060	4,300	6,210	9.2	9.3	9.4
State total	28,060	20,690	23,990	8.4	10.0	9.7

District & county	Production			Value of sales ^{1/}		
	2004r	2005r	2006p	2004r	2005r	2006p
	<i>Tons</i>	<i>Tons</i>	<i>Tons</i>	<i>1,000 dollars</i>	<i>1,000 dollars</i>	<i>1,000 dollars</i>
Washington	19,840	18,939	17,409	1,867	1,559	1,693
Not disclosed	150,468	145,534	153,031	13,595	11,933	13,593
Willamette Valley	170,308	164,473	170,440	15,462	13,492	15,286
Not disclosed	1,551	1,662	3,027	109	123	233
Coastal	1,551	1,662	3,027	109	123	233
Umatilla	13,640	-	-	1,017	-	-
Not disclosed	51,009	40,128	58,505	3,469	2,800	4,158
North Central	64,649	40,128	58,505	4,486	2,800	4,158
State total	236,508	206,263	231,972	20,057	16,415	19,677

r - revised, *p* - preliminary. ^{1/} Totals may not add due to rounding. A "-" indicates the data may not exist or may not be displayed due to confidentiality rules. The "not disclosed" values are the sum of all values hidden by the dashes and any county not listed. The Extension Economic Information Office uses different methods than USDA/NASS to set these estimates.

Source: Oregon Agricultural Information Network (OAIN), Extension Economic Information Office, Oregon State University

Sweet corn for processing: Production and value of sales, Oregon, 1996-2006



Source: Oregon Agricultural Information Network (OAIN), Extension Economic Information Office, Oregon State University

Sweet corn for processing: Acreage, yield, production, price and value of sales, Oregon, 1940-2006

Year	Acreage harvested <i>Acres</i>	Yield per acre <i>Tons</i>	Production <i>Tons</i>	Price per ton <i>Dollars</i>	Value of sales <i>1,000 dollars</i>
1940	1,500	3.3	5,000	14.00	70
1950	9,100	3.7	33,700	27.80	937
1960	21,500	5.0	106,400	23.90	2,543
1970	29,500	7.1	208,850	27.50	5,743
1980	33,700	8.7	292,500	62.30	18,224
1982	45,500	9.0	409,950	70.50	28,902
1983	38,795	8.6	331,750	68.50	22,724
1984	42,000	8.7	365,400	71.10	25,980
1985	38,600	9.2	354,750	69.70	24,725
1986	34,900	9.2	322,450	66.61	21,477
1987	38,891	8.8	343,900	64.20	22,077
1988	38,500	9.2	353,450	71.30	25,200
1989	45,500	8.7	394,950	80.50	31,793
1990	47,200	8.4	396,450	85.51	33,899
1991	47,500	8.4	399,950	84.10	33,636
1992	43,300	9.0	391,450	81.39	31,862
1993	44,800	8.7	387,550	83.29	32,280
1994	47,300	9.1	431,850	82.50	35,628
1995	48,900	9.3	452,330	78.20	35,372
1996	48,300	9.1	438,100	84.10	36,843
1997	41,000	8.6	353,000	83.80	29,580
1998	37,300	8.4	311,920	83.69	26,104
1999	44,000	8.1	358,270	81.69	29,268
2000	35,700	8.6	306,650	80.38	24,647
2001	28,870	7.8	225,863	81.12	18,321
2002	28,250	8.1	227,726	79.09	18,010
2003	28,090	9.1	255,170	80.65	20,580
2004r	28,060	8.4	236,508	84.80	20,057
2005r	20,690	10.0	206,263	79.58	16,415
2006p	23,990	9.7	231,972	84.82	19,677

r - revised, p - preliminary. The Extension Economic Information Office uses different methods than USDA/NASS to set these estimates. Source: Oregon Agricultural Information Network (OAIN), Extension Economic Information Office, Oregon State University