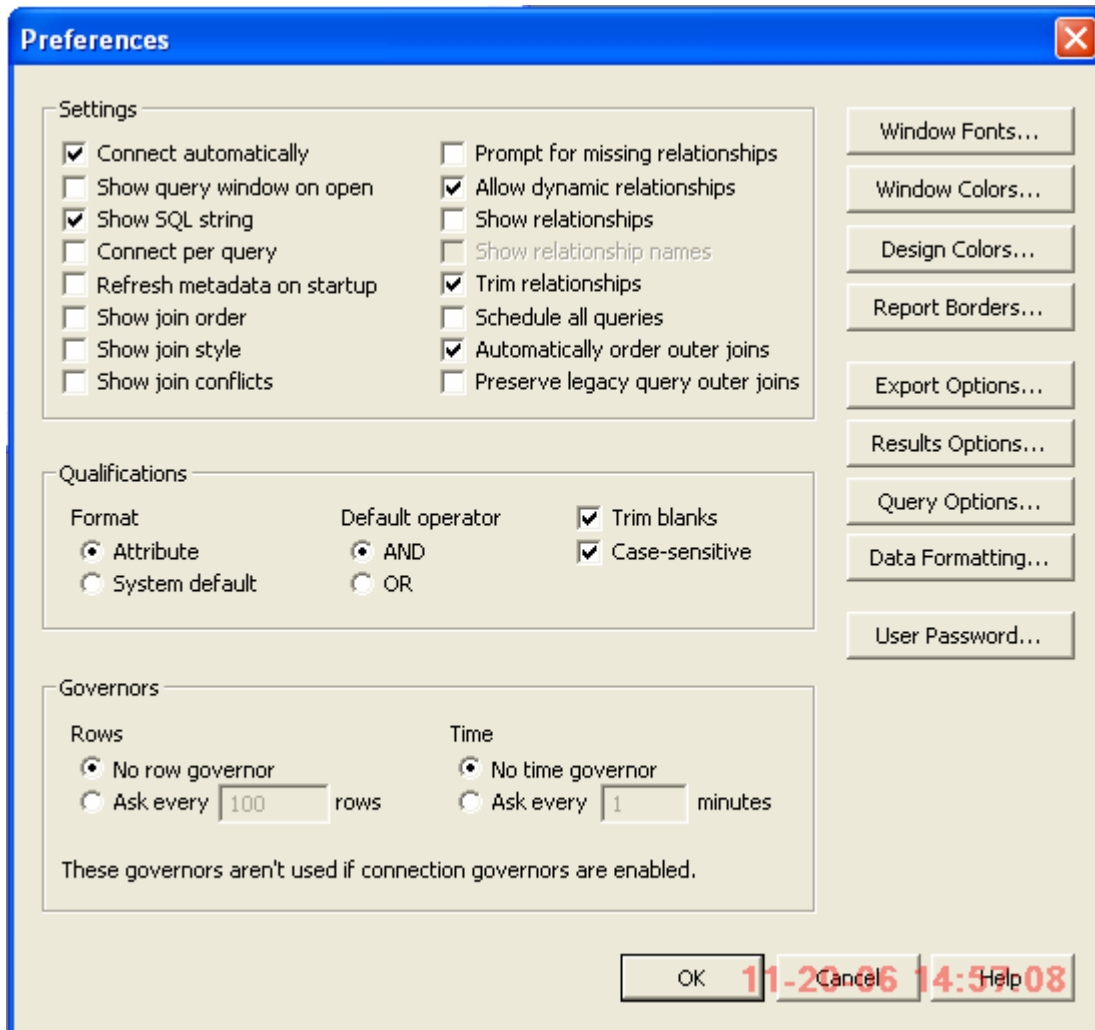


## Recommended User Preferences Settings

In each model you use, go into the {Tools} menu and choose "Preferences".



Advanced users may want to uncheck "Automatically order outer joins", and add checks for "Show join order" and "Show join style"

You may customize the model's appearance using the "Window Fonts...", "Window Colors...", "Design Colors...", and "Report Borders..." buttons. We recommend you use Arial 8 as your font.

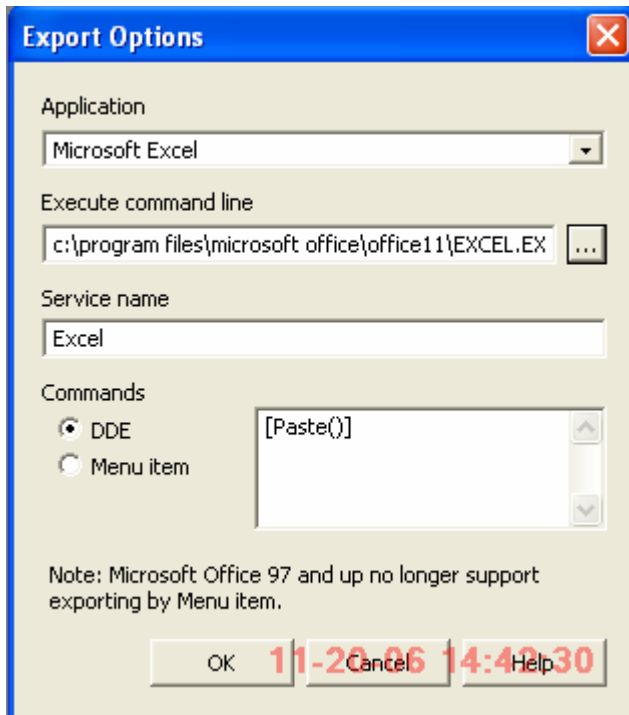
Recommended settings for "Export Options..." and "Results Options..." are shown on the next page.

"Query Options..." and "Data Formatting..." we don't usually use.

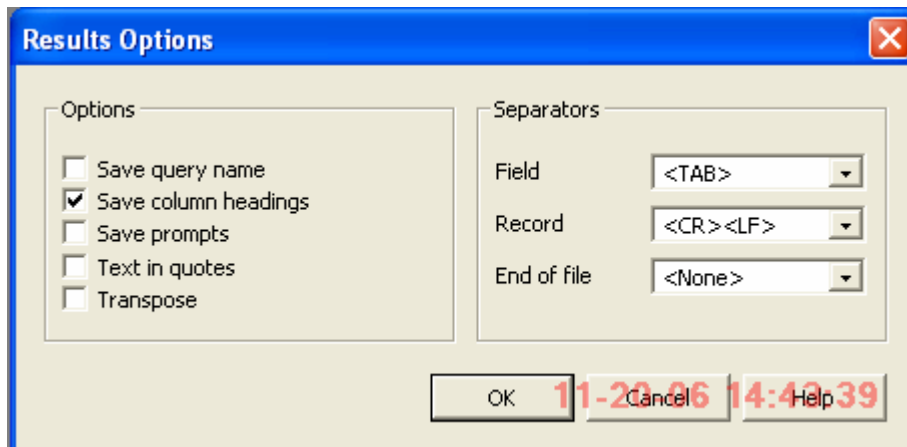
DO NOT set a password with the "User Password..." button. That adds an additional password to your model, permanently locking you out if you ever forget it. It is not related to your password for logging into the DW.

If you make any changes in this dialog box, click on [OK]. Then go to the File menu and choose Save to update your user customizations.

## Recommended User Preferences Settings



Most people export their data to Excel, but you may choose another application, if applicable.



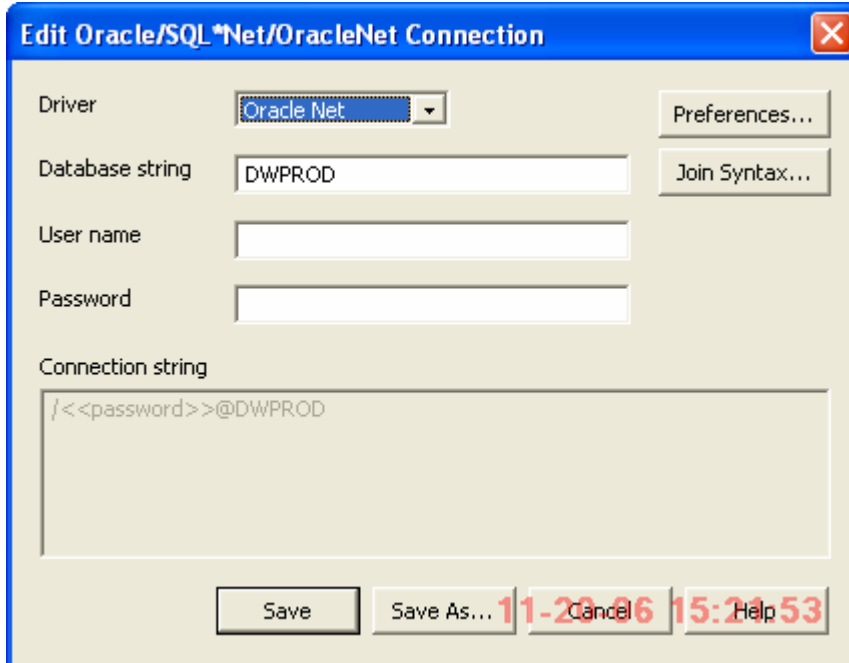
You may also want to check "Save query name" and "Save prompts".

---

You only need to edit your connection file once, because all the models share the same connection file.

Go to the {Host} menu, choose "Connections". Highlight "GQLOSUDW.con" and click [Edit...].

## Recommended User Preferences Settings



Driver: Oracle Net

Database string: DWPROD

User name:

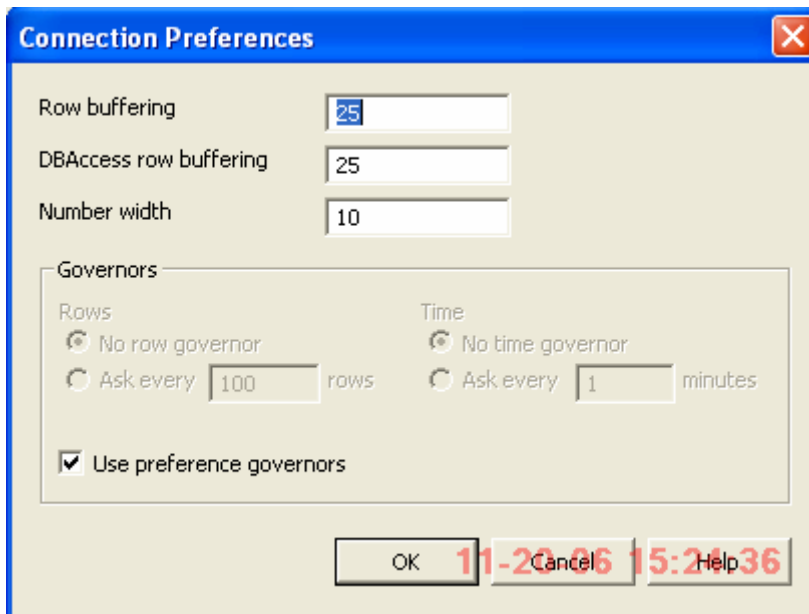
Password:

Connection string: /<<password>>@DWPROD

Buttons: Save, Save As..., Cancel, Help

In this dialog box, if you don't share your computer with other DW users, you may enter your User name so that you don't have to type it in every time you log in.

Click on [Preferences...].



Row buffering: 25

DBAccess row buffering: 25

Number width: 10

Governors

Rows:  No row governor

Time:  No time governor

Ask every 100 rows

Ask every 1 minutes

Use preference governors

Buttons: OK, Cancel, Help

25, 25, and 10 are the standard settings. If you have a reasonably powerful computer, you can try changing the Row buffering and the DBAccess row buffering settings to 200 each. If you subsequently have trouble running large queries, take the settings back down to 25. If you still have 1 and 71 as your row buffering settings, your queries will run more slowly because those are very inefficient settings. You should see a performance boost by putting the same number in both of the row buffering fields.

Your Join Syntax should be "SQL/92 (default)".

If you make any changes, at the Edit Oracle... dialog box, click on [Save].