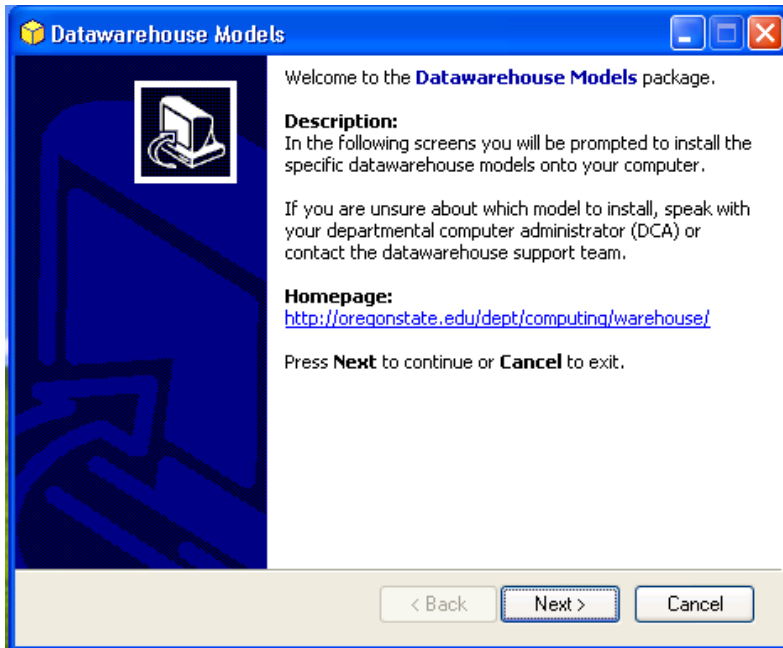


Automated Installation of New Data Warehouse Models

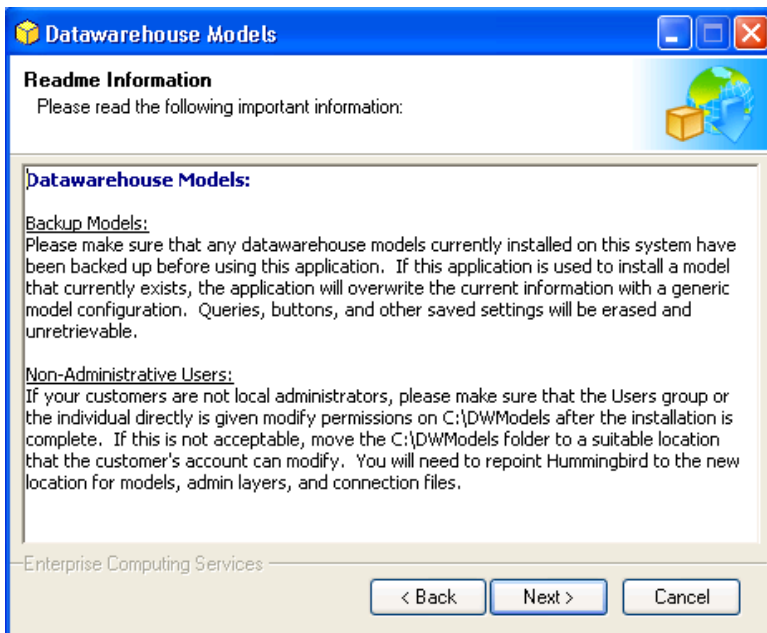
Warning: This process is only intended for new users or new models being given to current users. Current users already have data warehouse models, and use of this process could cause them to lose valuable resources.

Log on to the computer as a member of the Administrators group.

Run <\\tss-softstore\Software\Data Warehouse\Models\DWModels.exe>.

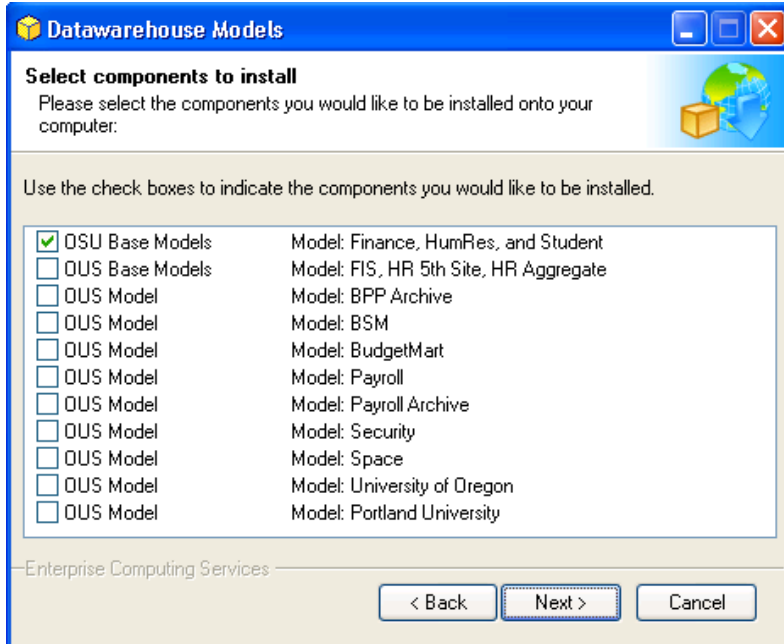


Click "Next".



Read the notes and make sure that you understand them. Then click "Next".

Automated Installation of New Data Warehouse Models



Most installations will only need a check next the OSU Base Models, but if your user is authorized to access other models, check next to any ones they need.

Click "Next" and wait for the files to extract. When the application closes, the installation is done.

Grant Permissions

Note: This step is only necessary if the user of the computer doesn't have administrative permissions granted to them.

In Windows Explorer, right-click on the DWModels folder and choose "Sharing and Security".

Choose the Security tab and highlight the "Users" group. Check the "Allow" beside "Modify".

Click "OK".