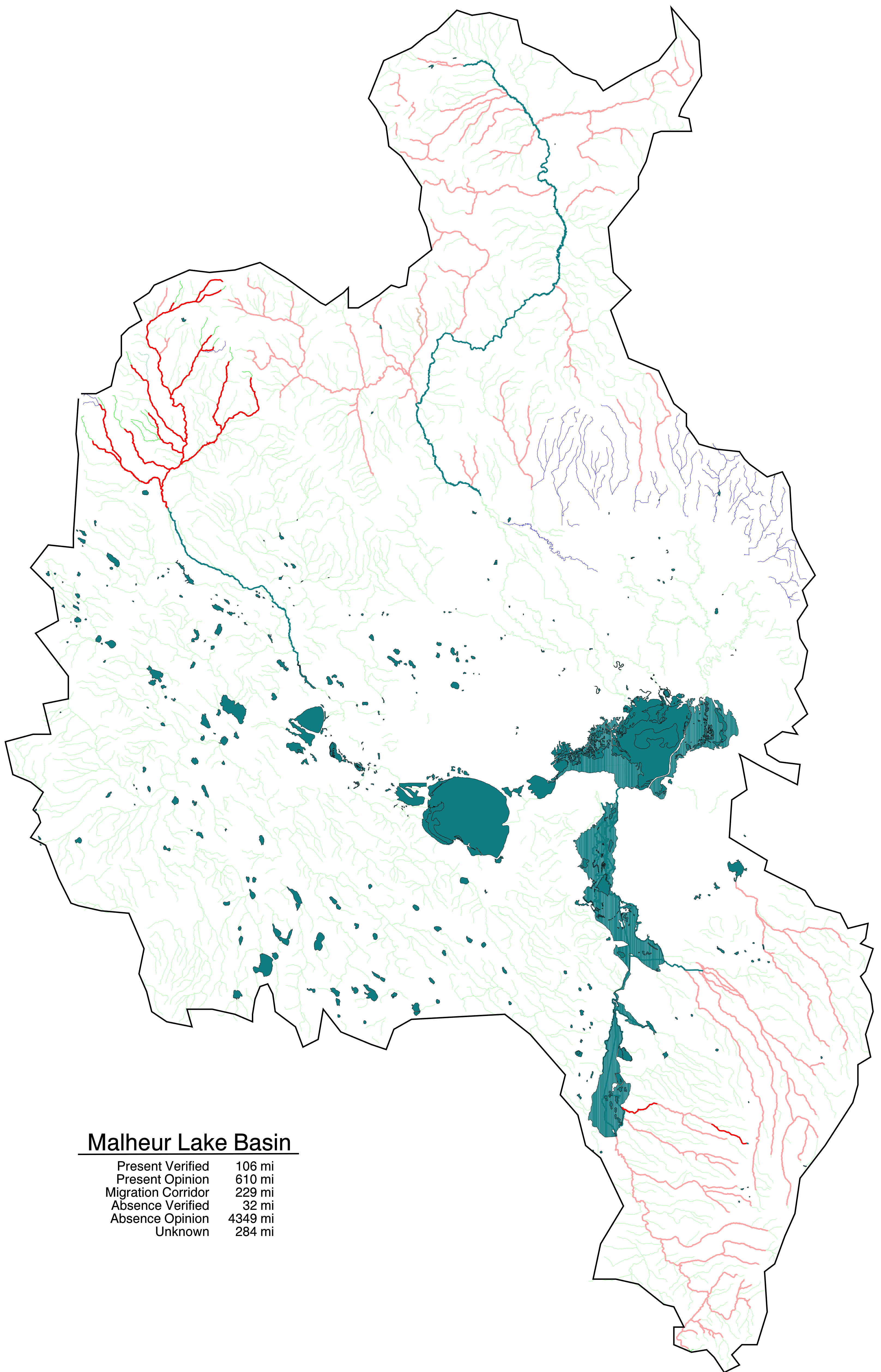


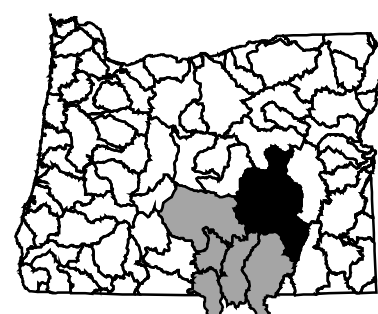
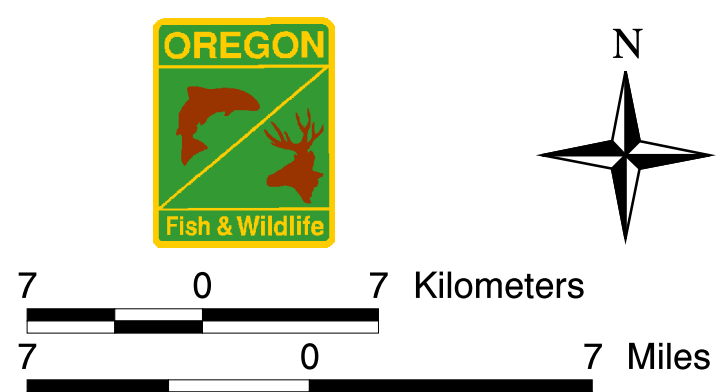
# Great Basin Redband Trout Stream Distribution Map: Malheur Lake Basin



## Malheur Lake Basin

Present Verified	106 mi
Present Opinion	610 mi
Migration Corridor	229 mi
Absence Verified	32 mi
Absence Opinion	4349 mi
Unknown	284 mi

- Lakes
- HUC Boundary
- Redband Trout Distribution
- Absence Based on Professional Judgement
- Absence Verified by Fish Sampling
- Presence Based on Professional Judgement
- Presence Verified by Fish Sampling
- Migration Corridor
- Unknown



### Map Description and Sources

Presence and absence information of stream resident redband trout (*Oncorhynchus mykiss* ssp.) in Great Basin streams was compiled from information queries to professional fisheries biologists from the Oregon Department of Fish and Wildlife, the Bureau of Land Management, and the U.S. Forest Service. The resulting data, in point coverage and stream segment level form, was used to classify stream routes on 1:100,000 scale digital line graphs, to portray use as being either present, absent, migration corridor, or unknown. Each assertion of use was also classified as being verified by field sampling data, or based on professional opinion. Distribution limits reflect current, and year round use only. Stream reaches that historically had redband trout, but now do not, and reaches that likely have never had redband trout are both portrayed as absent, as are reaches that have redband trout only seasonally, or only during high-water years.

This map has been updated by data from summer 1999 status review sampling.

Suggested citation: Filteroff R.L. and J.M. Dambacher. 2001. Great Basin redband trout stream distribution map. Oregon Department of Fish and Wildlife, Aquatic Inventory Project, Corvallis.

Copyright 2001: Oregon Department of Fish and Wildlife.